



S p e c i a l i s t   A l l - T e r r a i n   V e h i c l e s

**Standard Builds 5m-6.5m**





I am proud to be able to introduce you to the newest addition to our range of services. The specifically designed standard body is an affordable choice for Overland Travel, built only from the highest quality materials.

They are provocatively priced at a price point only achieved by clever design, standardisation and efficiency in manufacture. These bodies utilise all the same materials as our bespoke builds in a desirable layout.

Based on over twenty-three years of truck building and tens of thousands of miles of overland travel. It is what I believe is the minimum requirement to safely and comfortably travel the globe.

The raw simplicity makes it easy to understand and operate the habitation body, suitable for everyone from solo travellers to small families. Ideal for mounting onto most vehicles with a GVW of >7.5t, these bodies can be delivered in as little as eight weeks.

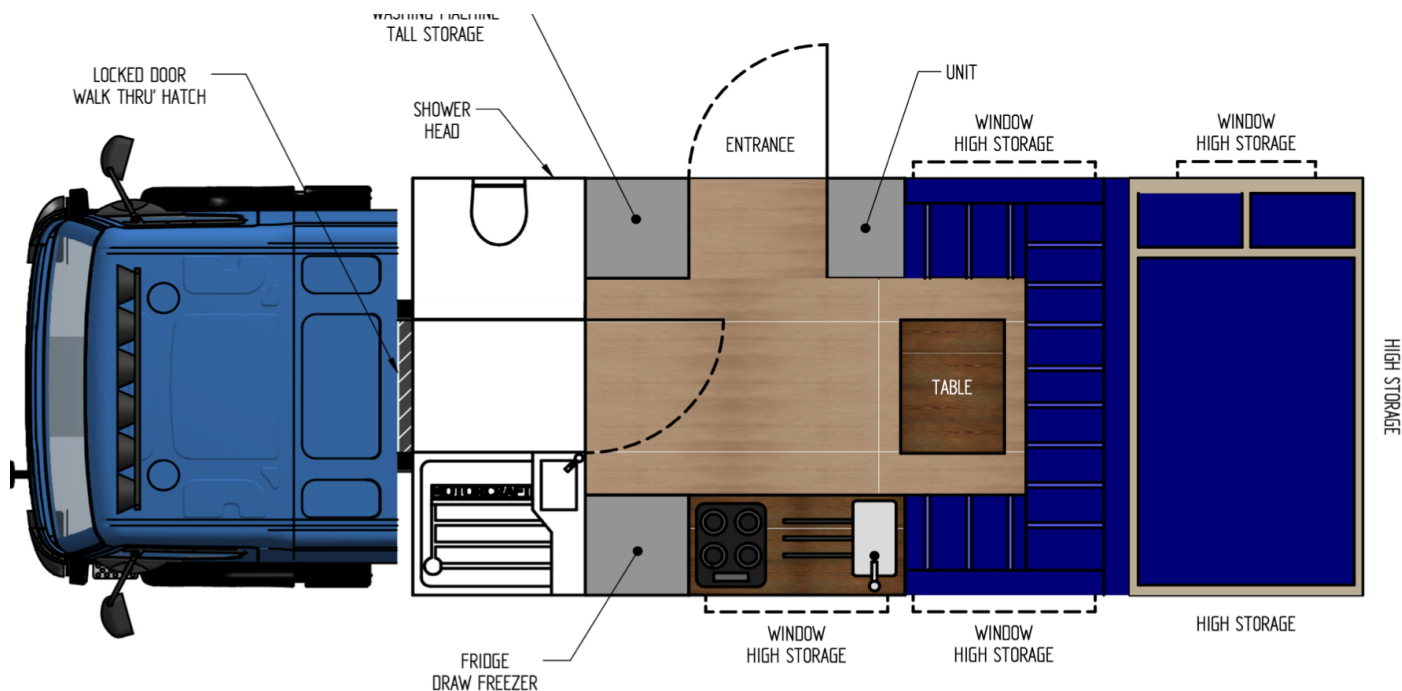
*Jan Parkin-Coates*  
Founder & Owner

## Kalahari Layout

The Kalahari is the most sought after layout for overland vehicles as it offers an ergonomic design and efficient layout whilst retaining a stylish appearance.

It is available in both the 5m and 5.5m body lengths, making it suitable for small and medium-sized chassis.

Both lengths offer a permanent double bed and an ample seating area, which can be utilised as two temporary beds, making it a two plus two system (sleeps four); no wonder it is an ideal solution for those with occasional visitors.





All Images are for visual representation only and may be subject to change



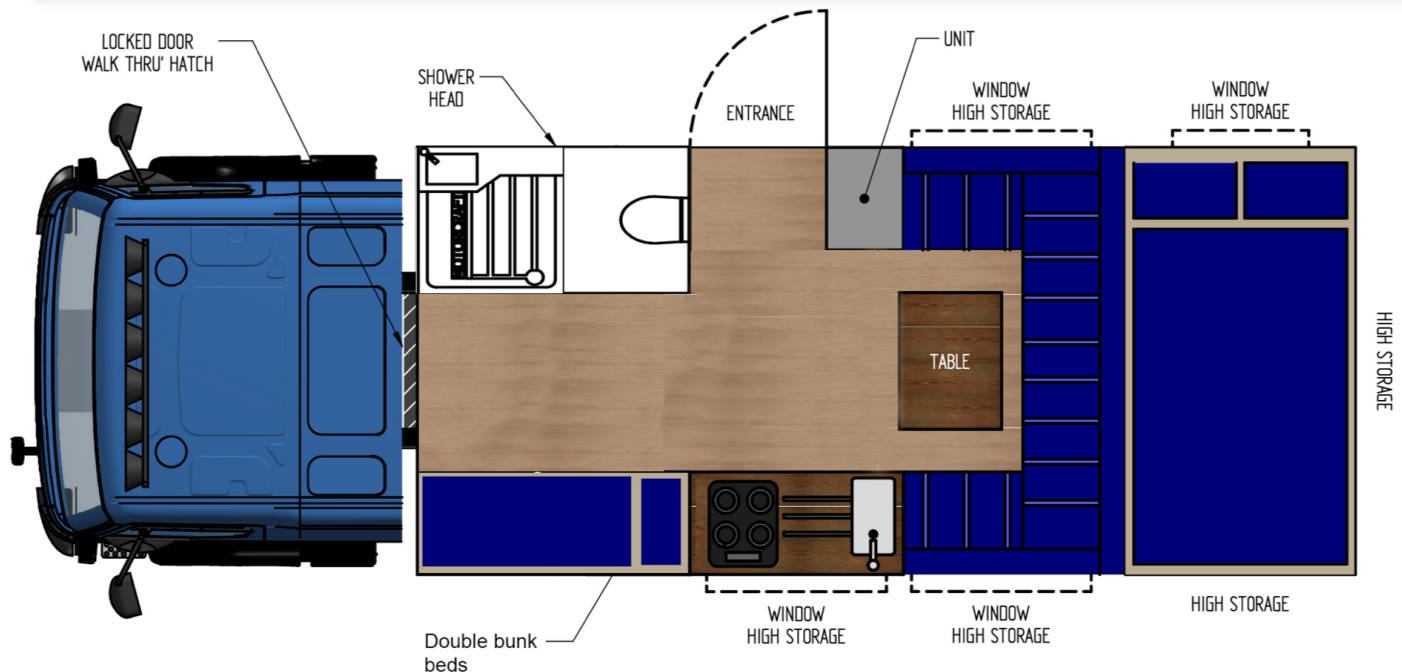
Kalahari Spec

## Gobi Layout

The Gobi is both versatile and stylish. Initially designed as a permanent four birth overland family home, this layout has proven popular for those wanting a little more space.

The Gobi has the same fixed double bed and seating area as the Kalahari but has bunk beds at the opposite end, giving you a permanent four-person home. But the Gobi has hidden flexibility; the twin bunks could be a trio if you need an extra permanent bed. Or perhaps you require a small office space instead of bunk beds or you just require additional storage space? Just let us know your preference.

It is available in either 6m or 6.5m bodies, the latter offering a larger seating area for relaxing in, more suited to long wheel based 4x4 or 6x6 trucks.





All Image are for visual representantion only and may be subject to change



Gobi Spec

## Body Specification

The Motorcraft standard habitation bodies have been designed by us and manufactured in-house by our dedicated body team. We are using only the highest quality materials available on the market today, creating an undeniably solid and robust unit to build your home in.

We believe in building your overland body to last a lifetime, so at Motorcraft, we don't build lightweight bodies because we don't believe in them. After all, the body is the backbone of your vehicle. It has to be robust enough to withstand some of the harshest conditions on the planet while being elegant enough for you to call it home happily

Motorcraft have specifically engineered the creation of the Motorcraft habitation bodies to be thermally efficient, durable and practical.

Our key features are:

Construction of 60mm thick fibreglass/birch composite panels

Structural aluminium edge members

Replaceable FRP corner proctors

120mm insulation in the floor with an integrated 4 point torsion-free subframe

Integrated pull out steps.

Body to driving cabin access with weatherproof, flexible seal and locking security door.

Superior thermal properties  $R=1.379(K.m^2)/W$





The external dimensions for our standard bodies are:

Width - 2300mm

Height - 2400mm

Length - 5000mm or 5500mm for the Kalahari

Length - 6000mm or 6500mm for the Gobi



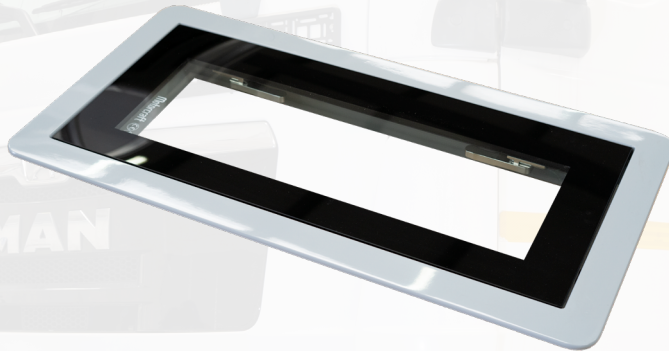
## Windows & Doors

- Entrance door made from 60 mm FRP with aluminium reinforcement and a five-point locking mechanism, full-length stainless steel hinges.
- Rear storage locker doors made from 40 mm FRP with aluminium reinforcements, full-length stainless steel hinge and double locks.



**Motorcraft**  
Adventure Developments





- Four Motorcraft double glazed toughened glass windows. Scratch resistant with aluminium security reinforcing.
- Black aluminium internal blackout window blinds with an integrated fly screen
- 400 x 400 mm Skylight in the bathroom with blackout blind and flyscreen

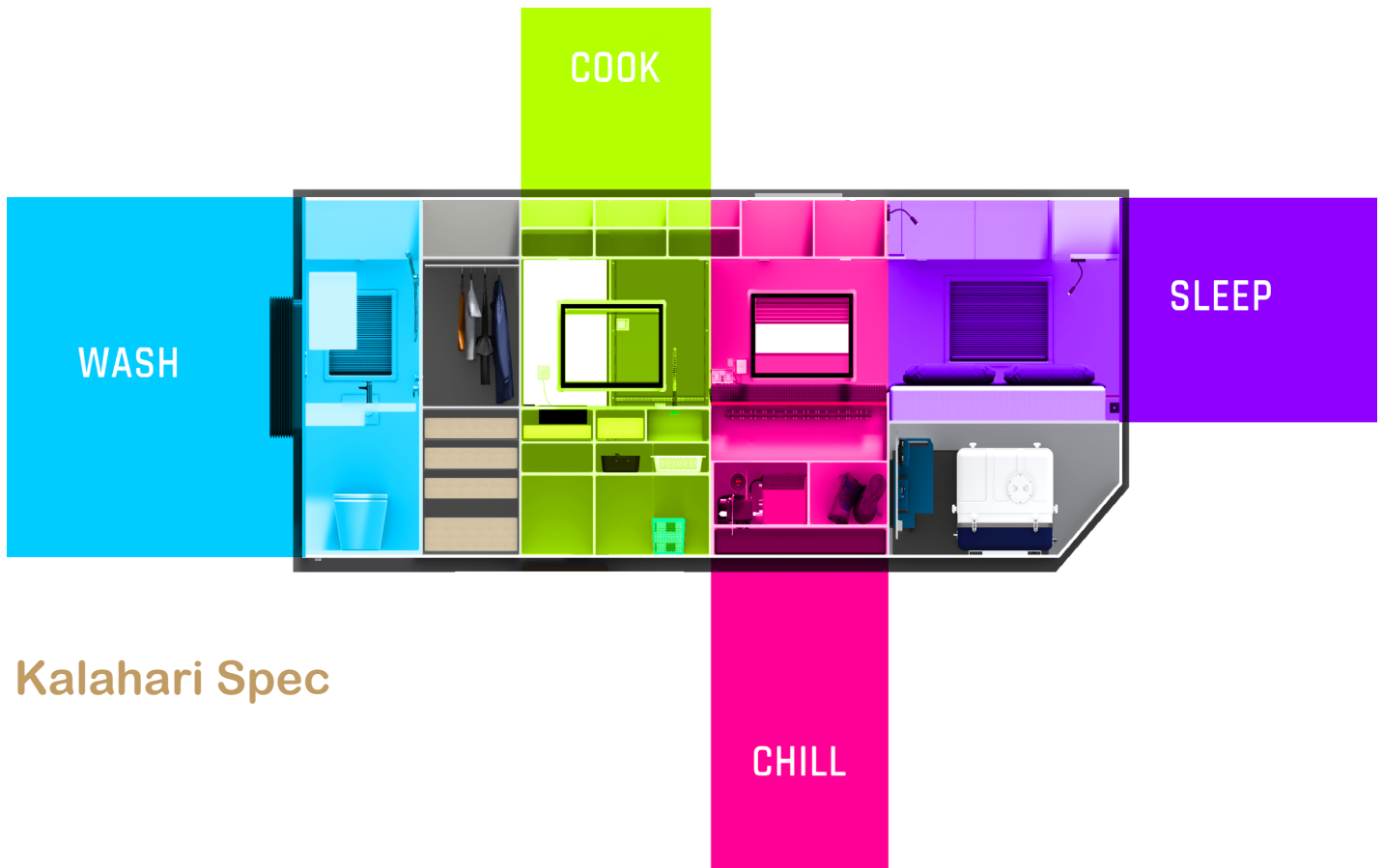
## Interior Layout and Design

Motorcraft adventure developments recognise the importance of combining, luxury, practicality, durability and style in your overland home. This is why we are proud to boast that all our cabinetry is crafted in-house by our master craftsmen. Without compromising we use only the finest quality birchwood plywood, faced with a hard-wearing finish of your choice. Ensuring you have a stylish, practical and personal feel to the interior space. With durability in mind, all the ironmongery is stainless-steel. With fixtures and fittings chosen by you, the customer.

The interior space not only is capable of withstanding the forces of off-road travel, it looks and feels like home.

So you can follow your dreams, whether it is a short adventure or a circumnavigation of the globe.

- Fixed double bed
- Seating area capable of seating 4 (6 on a 6.5m Body)
- Variety of colours available for seating cushions
- Kitchen area
- Bathroom Interior
- Lighting Systems
- Integrated CO2/smoke detector
- LED ceiling lights throughout the living area
- Laminate flooring throughout
- Hard wearing rubber floor in the boot area



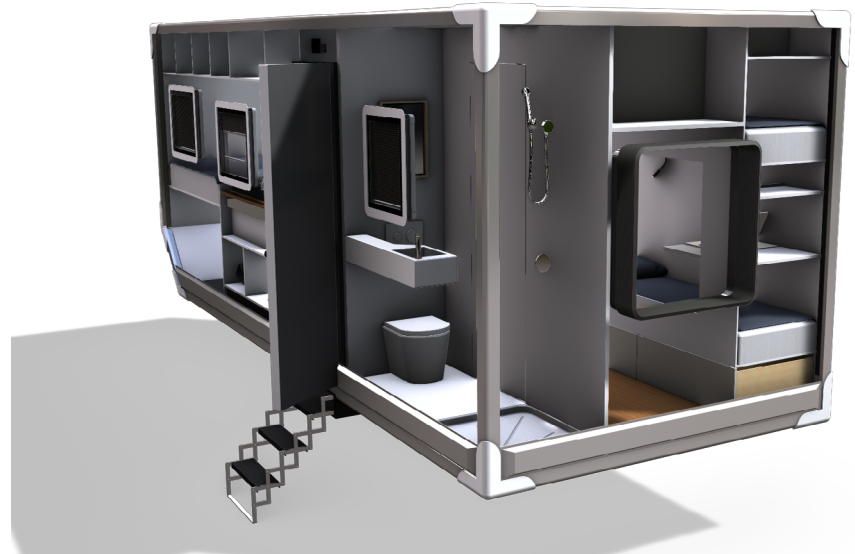
Kalahari Spec



## Bathroom

- Motorcraft white heavy-duty FRP multi drain shower tray
- Motorcraft white long life FRP stain-resistant sink unit
- Washing machine (Extra)
- Dometic CTS4110 Cassette toilet  
(Composting toilet upgrade option available)
- Shower Head

### Gobi



### Kalahari



## Toilets

Our bathroom builds come with a ceramic-lined cassette toilet as standard. A popular upgrade at the moment is the composting toilet. While not as convenient to use (no simultaneous liquid and solid deposits) and a slightly more manual approach to keeping clean. They offer a far superior experience when it comes to disposing of the contents. Typically a couple living full-time in the vehicle may need to empty the liquids tank every 3-4 days and the solids every 4-6 weeks.

## Water System

- 350L freshwater storage, internal frost-free water storage
- Inside shower up to 10L/M flow rate (a good domestic flow is 10-12 L/M)
- Motorcraft exterior water control locker with stainless steel fill points

Optional extra

External Grey-water storage

## Gas Central heating

- Comfortable, silent heating all year round
- One unit delivers both heating and hot water
- Room thermostat integrated into touch screen control
- The slow natural movements result in the air with natural humidity.
- Hydronic heat is “there” without you noticing it.
- Providing hot water for the shower and the kitchen area

Webasto wet diesel or blown air diesel heating systems are also available.

## Kitchen

At the heart of every home is the kitchen. The large galley has ample space for comfortable living. It has a small pull out worktop for when you need that little extra space.

We understand that everybody has a different preference for cooking appliances. That's why our standard build comes with a Gas hob. However, this can be changed to an induction hob (power upgrade highly recommended) or upgraded to a Diesel Hob.

We also offer the ability to install an oven. This can be either a Gas, Electric or Diesel oven. As with the hob, if you are planning on going electric, we would suggest you increase your battery capacity and possibly the inverter power.

Worksurfaces can be upgraded from the standard engineered resin to either natural wood or natural stone.

### Including

- Engineered Resin Countertop with integrated stainless steel sink, wide choice of colours
- Single faucet, with hot/cold running water
- Two burner Gas hob.
- Isotherm stainless steel fridge/freezer









## Power System

The vehicles leisure power system is located in the rear of the vehicle under the bed. When using a silent generator, we also mount this in the centre under the bed. We do this because accessing the centre storage area can be difficult, and by mounting the generator there frees up easily accessible side locker space

- Full Victron Energy system
- 5" touch screen LCD control display
- 400ah Lithium batteries
- 5000Kva Inverter
- 910w monocrystalline solar panels
- GPS & GSM connectivity for global access and support (sim card required)
- Full battery condition monitoring and isolation in the event of out of parameter scenario.



Battery capacity upgrade option is available.

As with all our technical systems, the Victron power system comes with 12-month technical support included.

An extended package is available, giving you the support you need when you need it.



# Upgrade Options



## Lightbar

When driving in remote areas, it's best to avoid driving at night, but sometimes you have no choice when you have to. Extra lighting can make the difference between success and failure. That's why we only use high quality LED driving lights from LTPRTZ.

## Awning

An awning turns your outdoor space into a usable space in any weather, providing you with somewhere to sit on a sunny day or dry area to get your waterproofs. You can deploy our easy to deploy cassette awning in minutes with minimal fuss.

## Awning light

This LED waterproof light brightens up the outside area, creating a cosy environment for you to enjoy.

## Air-conditioning

We can fit Webasto air-condition units to either your vehicle cab or body or both giving you a more comfortable environment in hot, humid conditions. Note: depending on the final configuration, the addition of the air-con unit may impact the amount of solar you can have.

## Waste-water tank

We highly recommend the use of a greywater tank. It's on the extras list due to the variation in size depending on requirements and vehicle. Please contact us to discuss further



# Exterior Additions

## External shower

Our external shower connection provides you with a thermostatically controlled shower outside your truck. Great for rinsing off those sandy feet or getting the mud off your dog before they jump on the sofa!

## External gas port

Are you a fan of a gas BBQ? Do you enjoy sitting out on a mild evening with a patio heater? Then an external gas port makes it easy and safe to connect any gas appliances you have outside your vehicle.

## Outside catering

Our outside catering unit turns one of your side lockers into a kitchen. Giving you a gas stovetop, sink with running water and a bin. So you can have all the luxuries from inside, outside.





## Habitation Body Winterisation

Our vehicle body is capable of sustaining travel in some of the harshest condition on the planet.

If you are planning on travelling in the extreme cold consistently below -8c, we recommend installing our winterisation package.

The kit includes heating elements on all exterior tanks and pipes, vehicle battery preheater, Webasto engine block heater and a grey tank bypass valve.



## Winches

Winches offer that extra peace of mind when travelling in remote regions on your own. We can manufacture either front or rear-mounted winch brackets and provide electric winch watered from 4500lbs to 25000lbs. Please discuss your requirements with us.

## Brush Rails

Brush rails are the stainless steel rails that mount on the roof of your habitation body. They protect the body from impacts from low hanging trees and look great finished in hardwearing black raptor paint.

## Roof Rack

A stainless steel roof rack has two functions on an expedition vehicle. It provides additional storage for any large items you may have, and much the same as the rub rails protects against low hanging branches. These are made bespoke to your vehicle and, where possible, will include 'A' pillar brush bars.

## Roof Rack Lockers

For long term roof rack storage of smaller items, locker boxes can be a helpful solution. These waterproof lockable boxes securely mounted on your roof rack are a fantastic place to keep things you seldom use but don't want to travel without them.

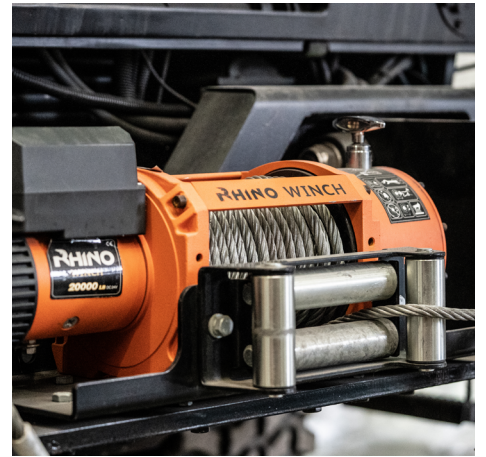
## Hydraulic Stabilisers

Our dual purpose hydraulic stabilisation legs deploy from the chassis at the rear. Offering the ability to level the vehicle, take the rock out of the suspension and tyres, giving a more comfortable living experience.

## Bike lifts

We offer two rear lifting options. Our cable-operated rear platform with a safe working load of 250kg. Suitable for use with a small motorbike and a single wheel. Or you can upgrade to a hydraulic rear lifting platform with a safe working load of 500kg its ideal for larger bikes and multiple wheels.





Fabricated  
for you,  
to last  
forever





# Go Anywhere



## Safari Hatch

To complete the Motorcraft hatches range, we offer you the spectacular safari hatch, which will provide you with the option to enjoy those breathtaking views without compromising on security or introducing large windows that can make the habitation box hot. The safari hatch retains the same style as the windows and door. The Motorcraft safari hatch opens wider than a standard window, maximising those views and offering more privacy when closed. There are two additional window options available, a fixed window or an opening window, both available with or without blinds.

## Monsoon Windows

With all the benefits of the premium windows, they have the additional benefit of allowing you to open the window fully whilst it is raining. The curved lip above the window acts like your own personal canopy, allowing you to enjoy the fresh air while you watch the rain without getting wet.

## Sky Hatches

In addition to the Motorcraft windows collection, we also offer you the Sky Hatch, with an alluring design allowing you star gazing opportunities or to use as an exit to the roof. The Motorcraft sky hatch brings you the ultimate in ventilation and fanatic views without compromising on quality, made with a GRP frame and panel for thermal efficiency, stainless steel fixings, double glazed fixed panel window and a load assisted opening. Available with flyscreen and blinds as an optional extra.

## Skylights

Having adequate ventilation is a must in any home and is paramount in a live-in vehicle. In hotter climates, the additional air circulation may reduce the internal temperatures, and in the cold weather, it ventilates moisture reducing condensation. The Motorcraft skylights are a superb way to give you additional ventilation and give you natural light. They are low profile and impact-resistant, double glazed with toughened glass, manufactured from GRP and available with a roller blind fly screen and blackout blinds as an option.

# Do Anything







## Water filtration

If you plan to fill your water tanks from unknown quality water sources, we recommend upgrading to have onboard water filtration. We would always recommend storing your water lightly chlorinated (using chlorine dioxide tablets is the most common way) ensuring you have no bacteria growth within your water system. Then, use one of our filtration units as both a secondary filter (0.5um) and the activated charcoal filter to remove the chlorine's taste and smell.

## Re-Paint

A sad reality of second-hand vehicles is that they will most likely require painting. Here at Motorcraft, we provide one of the best commercial paint finishes available in the UK. You may find a cheaper alternative, but we pride ourselves on providing a top to toe service. The cab's exterior is completely stripped down, including the removal of the glass for a professional finish. Included in the cost: painting of cabin, chassis and body.

## Side Lockers

If your planning on travelling for extended periods, you need as much storage as you can get on board. A good way of getting the most from the space you have is our custom made under chassis lockable storage lockers. Manufactured from aluminium, they will never suffer from rusting. They are lightweight but sturdy. Finished in Black raptor paint and make the truck look perfectly finished.

## External Water-fill

Our water-fill pump means you can unreel a hose from your truck and suck up water from a clean natural watercourse. We will provide you with additional filtration to ensure that only the purest water goes into your tanks.



## Generators

Generators are a very useful tool. They serve three functions in our installations.

They provide a reliable means to charge your leisure batteries.

They provide power assist, so if you are drawing more power than your inverter can deliver, the generator will boost it.

They offer redundancy. Should your inverter fail, you can still have a mains voltage power supply.

With the exception of the Tec29 all our generators are automatically controlled from the Victron control system. This means that if the system is overly discharged or overloaded, the generator will automatically start. There is also a manual start/stop option to allow you to run the generator at a time that suits you.

The major difference between the generators we offer is the noise and vibration levels. The more expensive generators are significantly less intrusive when running. This is achieved by using different engines and using less of their peak capacity therefore loading the engine less.

### Whisper GV-4 (scalino)

1-cylinder Permanent Magnet generator with external PMG box (power module)  
3.4 kVA (2.8 kW) continuous 230 V power  
High efficiency and strong peak power  
Outstanding voltage stability and a pure sine wave  
Saving fuel and ensuring smooth running of your genset  
Genverter Power, the best choice for your energy supply  
Also available with stainless steel enclosure for installation outside the vehicle

### Fisher Panda 5000i Grentec

High efficient Variable Speed Technology  
Stage V Exhaust emissions compliant stage 5 v1a  
Integrated water-cooled and pre-silenced exhaust inside capsule  
Lightweight at only 120kgs  
Quiet running at only 54db(A) @ 7m (@ max rpm)

### Whisper GV-10

3-cylinder Permanent Magnet generator with external PMG box (power module)  
Excellent choice to replace traditional gensets  
10 kVA (8 kW) continuous 230 V power  
High efficiency and strong peak power  
Outstanding voltage stability and a pure sine wave  
Saving fuel and ensuring smooth running of your genset  
Genverter Power, the best choice for your energy supply

### Dometic Tec 29

Petrol generator, 2.6 KW, 230 V  
Variable speed generator – quiet and fuel saving  
Auto start function for automatic battery recharging  
Convenient and safe electrical starter  
Automatic low-oil cut-off protects from damage  
Overload and short-circuit protection  
Alarm functions for enhanced safety  
Operation via external control panel

## Alarm/Security Cameras

For the more security conscious, we offer a complete security system. It is made up of five cameras, an alarm unit, keypad entry and door sensors.

When the system is connected to the onboard wifi, the system will send push notifications to your mobile phone in an emergency, or you can check in on your truck at any time to see what's going on.

## Peripheral View cameras

An upgrade on the reversing camera, the peripheral view camera system uses a larger monitor in the cab allowing the use of edition cameras noted looked down the side of the vehicle eliminating blind spots.

## Rearview camera

Some drivers often appreciate a review camera. Installed so it can be left on while driving and manoeuvring, giving the driver a clear view of the road behind.

## Onboard WiFi

We offer both 4g and 5g onboard Wifi Systems. Using a compact industrial router with dual sim slots giving you network failover, so if you don't have data on one SIM, it will default to use the other. It includes a GNSS/GPS antenna adding the additional functionality of a vehicle tracker with a geofencing option to keep your vehicle safe and secure

Item Description		Cost, Inc fitting
<b>Kalahari Base Cost</b>		<b>£95,000</b>
<b>Gobi Base Cost</b>		<b>£99,500</b>
Gobi bunk area Re-configuration?		£1200
Grey water tank		On Request
Composting toilet		£800
Induction hob		£200
Diesel hob		£2500
Oven		£5600
Power upgrade 8kva		£800
Battery upgrade	per Battery	£2000
Victron extended technical support	Per Year	£175
Light bar		£525
Awning		£950
Awning light		£150
Air conditioning		£2250
External shower		£280
External gas port		£280
Outside kitchen		£1800
Winches	Front	£3200
	Rear	£3200
Winterisation		£5500
Brush rails	Unpainted	£1000
	painted	£1300
Roof rack	Unpainted	£4000
	Painted	£4500



Item Description		Cost, Inc fitting
Two Roof rack lockers	Unpainted	£800
	Painted	£1000
Hydraulic stabilisers		£2200
Bike lift	Cable Operated	£4950
	Hydraulic	£14900
Safari hatch	No Window	£1400
	Fixed Window	£1510
	Opening Window	£1950
Monsoon windows	Per Window	£30
Sky hatches		£2100
Sky lights	400x400	£495
	600x600	£595
Water filtration		£325
Paint (respray)		£7000
Side lockers		£3000
External water fill		£700
Generators	GV-4 (scalino)	£6115
	Panda Greentec	£11,000
	GV-10	£16,050
	TEC-29	£4100
Alarm / Security Cameras		£1000
Peripheral view cameras		On request
Rear view cameras		£510
Onboard wifi		£350

A golden-hour photograph of a savanna landscape. In the foreground, a large acacia tree stands on the left. In the middle ground, a vehicle is silhouetted on a hill. The background features more trees and a bright, hazy sky. The overall color palette is warm, dominated by oranges and yellows.

The adventure  
starts with

Motorcraft



Proud to showcase British Manufacturing

**Motorcraft Adventure Developments**  
Unit 7, Welsyke Ind Est,, Bentley Moor Lane,  
Adwick Le Street, Doncaster, DN6 8DB.